

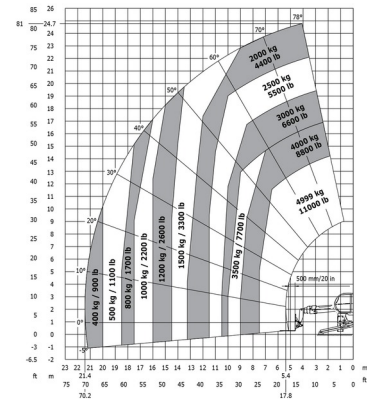


ROTATING TELEHANDLER



Lift trucks and telescopic handlers

MANITOU MRT2550 P+



» MANITOU MRT2550 P+



| | |
|------------------|----------|
| Lifting capacity | 4999 kg |
| Drive | 4x4x4 |
| Reach height | 24700 mm |
| Length | 7,45 m |
| Width | 2,49 m |
| Height | 3,05 m |
| Weight | 18900 kg |



Diesel engine



Radiographic remote control

ACCESSORIES

- Hook CMF - 6 tons
- Winch - 5 tons
- Negative platform
- Operator - CAT 2
- Fuel tank 1100 l with pump
- Work cage - 365 kg
- Multilifter GERENUK 500 kg
- Bucket 1.500 l - 2,40 m
- Jib with hook 6 ton (P6000)
- Jib with winch PT800
- Grab bucket 1.000 l - 2,40 m
- Glass Vacuum lifter POWR-GRIP 635 kg
- Frame mounted hook PC50
- Licence plate



Consult our website www.dumarent.be for the technical data sheet

If you have any questions about this machine or any accessory, please call us at +32(0)56 222 111 or send us an email.

There will be a cleaning and environmental charge if the machine is returned dirty or full of mud.

* All prices are VAT excluded.

* A deposit may be requested.



Duma Rent bvba - Torkonjestraat 23, BE-8510 Marke
T +32(0)56 222 111 • Fax +32(0)56 716 141
info@dumarent.be • www.dumarent.be

Region West-Flanders
056 222 111

Region East-Flanders
09 228 28 22

Region Antwerp
03 887 87 81

Region Brussels
02 705 05 09

Region Charleroi
071 33 36 38