

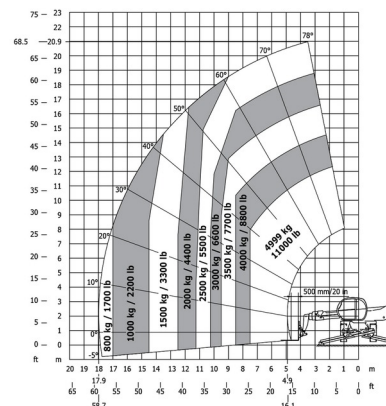


ROTATING TELEHANDLER

MANITOU MRT2150 P+



Lift trucks and telescopic handlers



» MANITOU MRT2150 P+



Lifting capacity	4999 kg
Drive	4x4x4
Reach height	20600 mm
Length	6,49 m
Width	2,49 m
Height	3,05 m
Weight	16095 kg

ACCESSORIES

- Hook CMF - 6 tons
- Winch - 5 tons
- Negative platform
- Operator - CAT 2
- Fuel tank 1100 l with pump
- Work cage - 365 kg
- Multilifter GERENUK 500 kg
- Bucket 1.500 l - 2,40 m
- Work cage - 1.000 kg
- Jib with hook 6 ton (P6000)
- Jib with winch PT800
- Grab bucket 1.000 l - 2,40 m
- Glass Vacuum lifter POWR-GRIP 635 kg
- Frame mounted hook PC50
- Licence plate



Diesel engine



Radiographic remote control

Consult our website www.dumarent.be for the technical data sheet

If you have any questions about this machine or any accessory, please call us at +32(0)56 222 111 or send us an email.

There will be a cleaning and environmental charge if the machine is returned dirty or full of mud.

- * All prices are VAT excluded.
- * A deposit may be requested.



Duma Rent bvba - Torkonjestraat 23, BE-8510 Marke
T +32(0)56 222 111 • Fax +32(0)56 716 141
info@dumarent.be • www.dumarent.be

Region West-Flanders
056 222 111

Region East-Flanders
09 228 28 22

Region Antwerp
03 887 87 81

Region Brussels
02 705 05 09

Region Charleroi
071 33 36 38