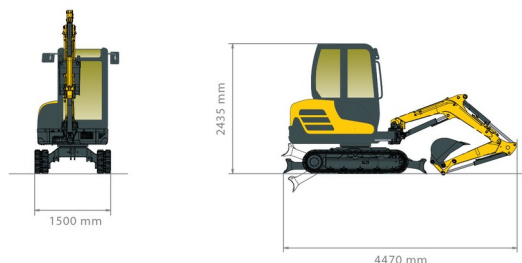
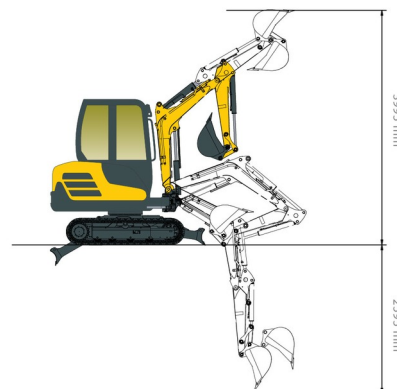




MINI EXCAVATOR CRAWLER

# YANMAR SV26

Construction and earthmoving machines



## » YANMAR SV26

Daily price	€ 160
2 to 4 days	€ 130 /day
Weekly price	€ 580
From 4 weeks	€ 435 /week

Tonnage	2.6 ton
Length	4,47 m
Width	1,50 m
Height	2,43 m
Weight	2600 kg

### ACCESSORIES

- Hammer NPK PH1 (2,5 - 3,5 ton)
- Ground driller Ø23, 30 or 38 cm
- Fuel tank 1100 l with pump
- Sorting grab 2,5 tons
- Synthetic ramps



Diesel engine

Delivered with buckets: width 25 cm, 50 cm (with teeth) and 120 cm.

If you have any questions about this machine or any accessory, please call us at +32(0)56 222 111 or send us an email.

There will be a cleaning and environmental charge if the machine is returned dirty or full of mud.

- \* All prices are VAT excluded.
- \* A deposit may be requested.

31 Dec 2024 04:06:16 / 635 / General conditions on our website duma-rent.com

**duma rent**  
on different places !

Duma Rent bvba - Torkonjestraat 23, BE-8510 Marke  
T +32(0)56 222 111 • Fax +32(0)56 716 141  
info@dumarent.be • www.dumarent.be

**Region West-Flanders**  
056 222 111

**Region East-Flanders**  
09 228 28 22

**Region Antwerp**  
03 887 87 81

**Region Brussels**  
02 705 05 09

**Region Charleroi**  
071 33 36 38