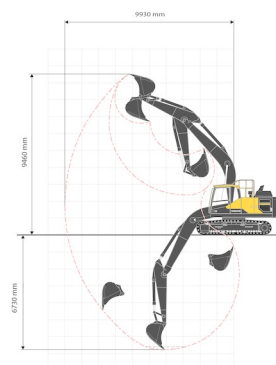




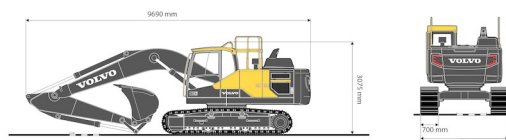
EXCAVATOR ON CRAWLERS

VOLVO EC220EL

Construction and earthmoving machines



» VOLVO EC220EL



| | |
|---------|----------|
| Tonnage | 22 ton |
| Length | 9,69 m |
| Width | 3,09 m |
| Height | 3,08 m |
| Weight | 22160 kg |

ACCESSORIES

- Fuel tank 1100 l with pump
- Tilttable bucket 14 - 25 tons
- Clamshell bucket 14 - 25 tons
- Filter overpressure system 14 - 36 tons



Exceptional transport



Overpressure air filtration system



Diesel engine

Quick coupler CW30. Height of guard rail : 3,27 m. With buckets: width 60, 120 (with teeth) & 200 cm

If you have any questions about this machine or any accessory, please call us at +32(0)56 222 111 or send us an email.

There will be a cleaning and environmental charge if the machine is returned dirty or full of mud.

* All prices are VAT excluded.

* A deposit may be requested.