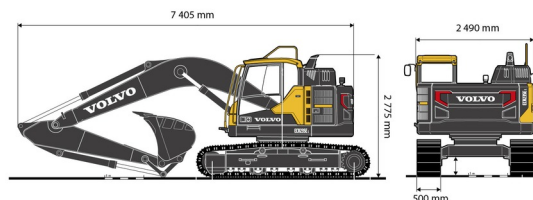
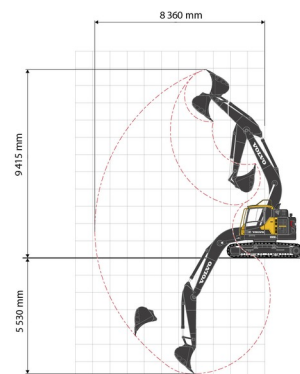




EXCAVATOR ON CRAWLERS

Construction and earthmoving machines

VOLVO ECR145L (rubber tracks)



» VOLVO ECR145L (rubber tracks)


Daily price	€ 320
2 to 4 days	€ 255 /day
Weekly price	€ 1255
From 4 weeks	€ 1005 /week


Tonnage	15 ton
Length	7,41 m
Width	2,49 m
Height	2,78 m
Weight	14435 kg

ACCESSORIES

- Hammer GH7 14 - 18 tons
- Fuel tank 1100 l with pump
- Tilttable bucket 14 - 25 tons
- Clamshell bucket 14 - 25 tons
- Sorting grab 14 - 18 tons
- Filter overpressure system 14 - 36 tons



 Overpressure air filtration system

 Diesel engine

Quick coupler CW30. Rubber tracks. Delivered with buckets: width 50, 80 (with teeth) and 160 cm.

If you have any questions about this machine or any accessory, please call us at +32(0)56 222 111 or send us an email.

There will be a cleaning and environmental charge if the machine is returned dirty or full of mud.

- * All prices are VAT excluded.
- * A deposit may be requested.



duma rent
on different places !

Duma Rent bvba - Torkonjestraat 23, BE-8510 Marke
T +32(0)56 222 111 • Fax +32(0)56 716 141
info@dumarent.be • www.dumarent.be

Region West-Flanders
056 222 111

Region East-Flanders
09 228 28 22

Region Antwerp
03 887 87 81

Region Brussels
02 705 05 09

Region Charleroi
071 33 36 38