

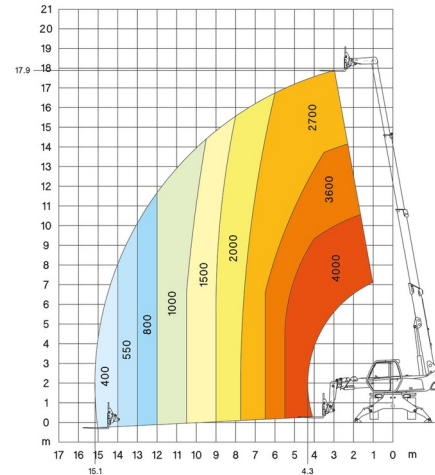


ROTATING TELEHANDLER

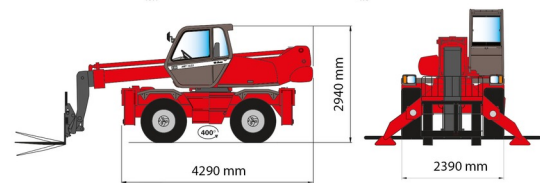
MANITOU MRT1840 EASY



Lift trucks and telescopic handlers



» MANITOU MRT1840 EASY



| | |
|------------------|----------|
| Lifting capacity | 4000 kg |
| Drive | 4x4x4 |
| Reach height | 17900 mm |
| Length | 4,29 m |
| Width | 2,39 m |
| Height | 2,94 m |
| Weight | 13300 kg |

ACCESSORIES

- Hook CMF - 6 tons
- Winch - 3 tons
- Operator - CAT 2
- Fuel tank 1100 l with pump
- Work cage - 365 kg
- Multilifter GERENUK 500 kg
- Bucket 1.500 l - 2,40 m
- Bucket 2.000 l - 2,40 m
- Work cage - 1.000 kg
- Grab bucket 780 l
- Grab bucket 900 l - 2,40 m
- Jib with hook 6 ton (P6000)
- Grab bucket 1.000 l - 2,40 m
- Hook with winch - 600 kg
- Glass Vacuum lifter POWR-GRIP 635 kg
- Front-mounted hook PCE50



Diesel engine



Radiographic remote control

Consult our website www.dumarent.be for the technical data sheet

If you have any questions about this machine or any accessory, please call us at +32(0)56 222 111 or send us an email.

There will be a cleaning and environmental charge if the machine is returned dirty or full of mud.

* All prices are VAT excluded.

* A deposit may be requested.



Duma Rent bvba - Torkonjestraat 23, BE-8510 Marke
 T +32(0)56 222 111 • Fax +32(0)56 716 141
 info@dumarent.be • www.dumarent.be

Region West-Flanders
056 222 111

Region East-Flanders
09 228 28 22

Region Antwerp
03 887 87 81

Region Brussels
02 705 05 09

Region Charleroi
071 33 36 38