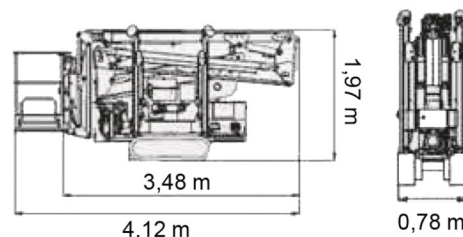
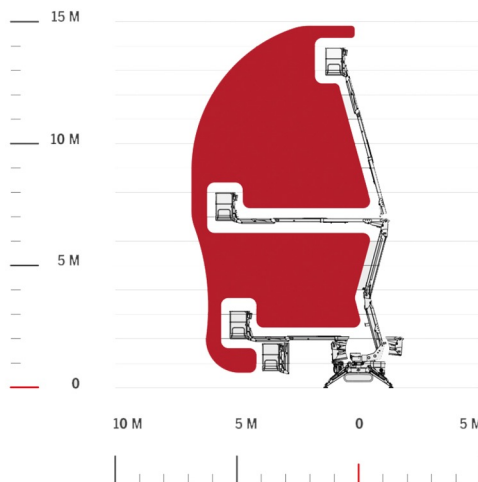




AERIAL WORK PLATFORM

# CMC S15

Hydraulic platforms and scissor lifts



» CMC S15

Daily price	€ 275
2 to 4 days	€ 220 /day
Weekly price	€ 850
From 4 weeks	€ 680 /week

Working height	14,90 m
Loading capacity	230 kg
Length	4,13 m
Width	0,77 m
Height	1,98 m
Weight	1960 kg

ACCESSORIES

- Operator - CAT 1
- Synthetic ramps



- 1 socket in working platform
- Diesel engine + electric engine
- Platform load indoors: 2 persons
- Platform load outdoors: 2 persons
- 4 Automatic Stabilisers

Non-marking tracks / Width cage included = 1,40 m

Consult our website [www.dumarent.be](http://www.dumarent.be) for the technical data sheet

If you have any questions about this machine or any accessory, please call us at +32(0)56 222 111 or send us an email.

There will be a cleaning and environmental charge if the machine is returned dirty or full of mud.

\* All prices are VAT excluded.  
\* A deposit may be requested.

**duma rent**  
on different places !

Duma Rent bvba - Torkonjestraat 23, BE-8510 Marke  
T +32(0)56 222 111 • Fax +32(0)56 716 141  
info@dumarent.be • www.dumarent.be

Region West-Flanders  
**056 222 111**

Region East-Flanders  
**09 228 28 22**

Region Antwerp  
**03 887 87 81**

Region Brussels  
**02 705 05 09**

Region Charleroi  
**071 33 36 38**