

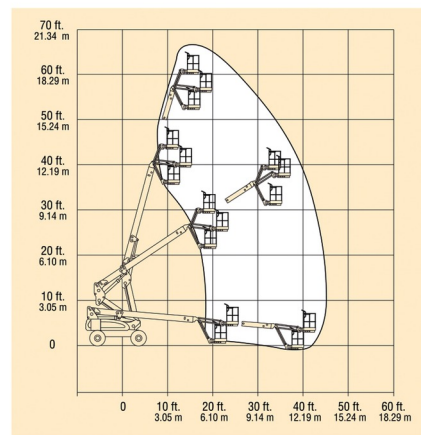


ARTICULATED BOOMS ELECTRIC

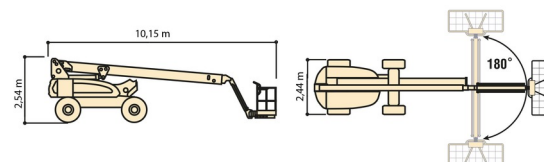
JLG E600JP



Hydraulic platforms and scissor lifts



» JLG E600JP



| | |
|------------------|---------|
| Working height | 20,39 m |
| Loading capacity | 237 kg |
| Length | 10,15 m |
| Width | 2,44 m |
| Height | 2,54 m |
| Weight | 7000 kg |

ACCESSORIES

- Operator - CAT 1



- 1 socket in working platform
- Platform load indoors: 2 persons
- Platform load outdoors: 2 persons
- Battery
- Anti-entrapment system

Consult our website www.dumarent.be for the technical data sheet

If you have any questions about this machine or any accessory, please call us at +32(0)56 222 111 or send us an email.

There will be a cleaning and environmental charge if the machine is returned dirty or full of mud.

- * All prices are VAT excluded.
- * A deposit may be requested.