

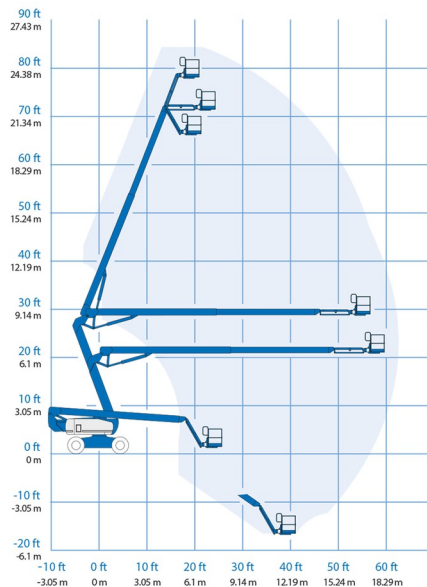


ARTICULATED BOOMS ELECTRIC

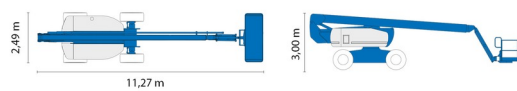
# GENIE Z60/37DC



Hydraulic platforms and scissor lifts



» GENIE Z60/37DC



|                  |         |
|------------------|---------|
| Working height   | 20,16 m |
| Drive            | 4x4     |
| Loading capacity | 227 kg  |
| Length           | 8,15 m  |
| Width            | 2,49 m  |
| Height           | 2,54 m  |
| Weight           | 7530 kg |

ACCESSORIES

- Operator - CAT 1



- 1 socket in working platform
- Platform load indoors: 2 persons
- Platform load outdoors: 2 persons
- Anti-entrapment system
- Battery

Non marking tyres.

Consult our website [www.dumarent.be](http://www.dumarent.be) for the technical data sheet

If you have any questions about this machine or any accessory, please call us at +32(0)56 222 111 or send us an email.

There will be a cleaning and environmental charge if the machine is returned dirty or full of mud.

\* All prices are VAT excluded.  
\* A deposit may be requested.

**duma rent**  
on different places !

Duma Rent bvba - Torkonjestraat 23, BE-8510 Marke  
T +32(0)56 222 111 • Fax +32(0)56 716 141  
info@dumarent.be • www.dumarent.be

Region West-Flanders  
**056 222 111**

Region East-Flanders  
**09 228 28 22**

Region Antwerp  
**03 887 87 81**

Region Brussels  
**02 705 05 09**

Region Charleroi  
**071 33 36 38**